

Staff Webinar Preschool

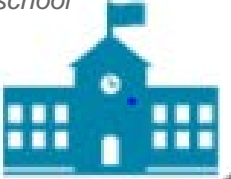




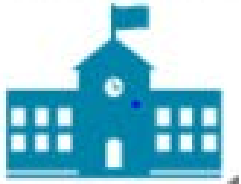


January 12, 2021



Our Potential Preschool Instructional Model

Hybrid: Students in cohort A either attend in person AM or PM on Mon/Tues and are at home Thurs/Fri. Cohort B students attend in person AM or PM Thurs/Fri and are at home on Mon/Tues.

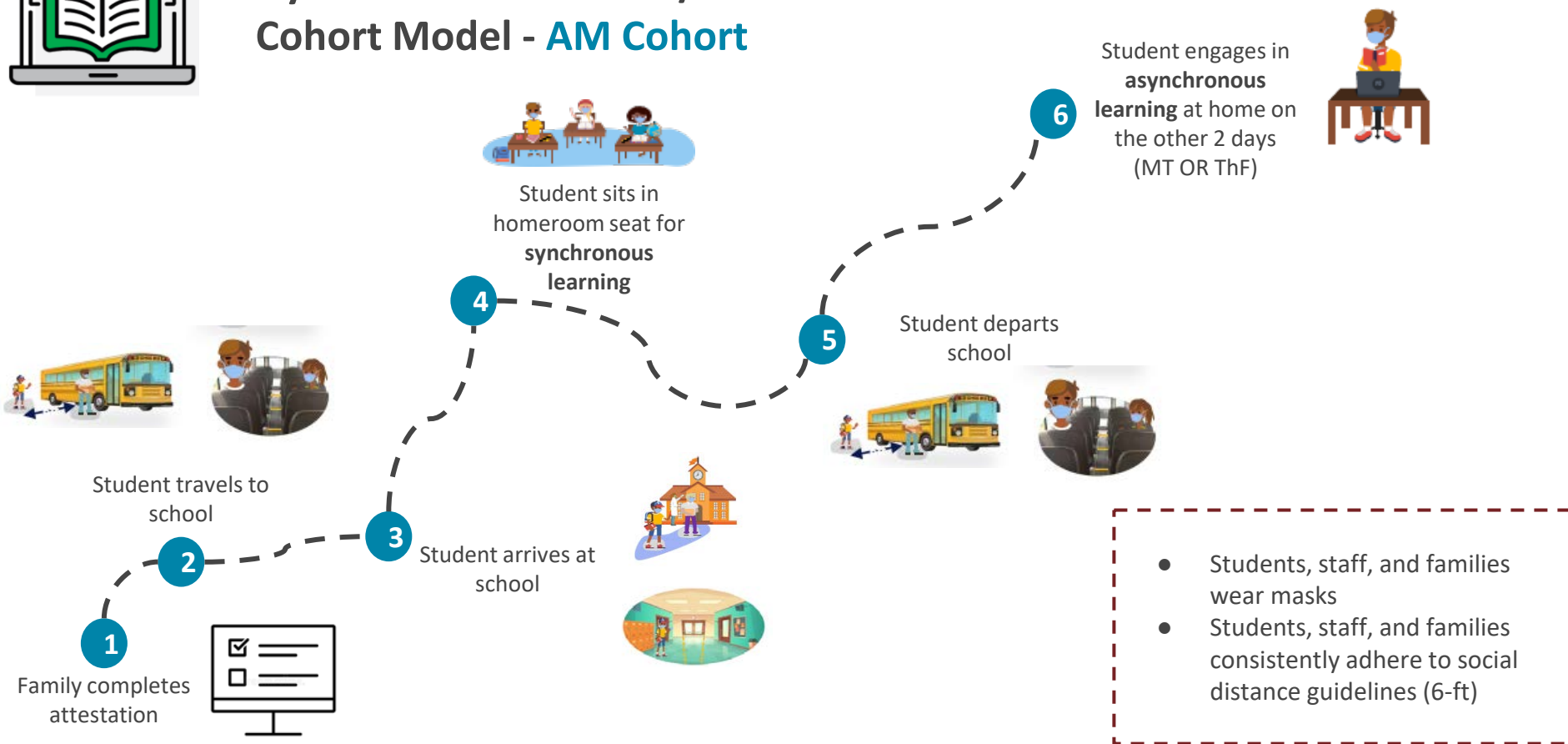
	Monday/Tuesday	Wednesday	Thursday/Friday
Cohort A AM or PM	<i>At school</i> 	<i>Non Instructional Day</i> 	<i>At home</i> 
Cohort B AM or PM	<i>At home</i> 	<i>Non Instructional Day</i> 	<i>At school</i> 

Overview of Breakout Group

- Instructional Model
- A Day in the Life of Students/Staff
- Synchronous and Asynchronous Instruction
- Wednesdays
- Transition Support and Preparation
- Input/Exit Ticket



Hybrid Instruction: AM/PM Cohort Model - **AM Cohort**





Hybrid Instruction: AM/PM Cohort Model - **PM Cohort**



Student arrives at school



Student departs school



Family completes attestation

Student sits in homeroom seat for **Synchronous learning**



- Students, staff, and families wear masks
- Students, staff, and families consistently adhere to social distance guidelines (6-ft)

Student engages in **asynchronous learning** at home





Hybrid Instruction: AM/PM Cohort Model - **TEACHER**

Note:

- Times as for an example only and are subject to change



8:45-9:00: WAC

1



Complete Staff
Attestation

2

3

9:00-11:15: *Group A*
In-Person
Instruction with 15
min Class Meeting



4

11:15-12:15:
Planning Time

5

12:15-12:45: Lunch

6

12:45-1:15: WAC

7

1:15-1:45: Wrap-up
Family Connection

8

1:45-4:00: *Group B*
In-Person
Instruction with 15
min Class Meeting



9

4:00-4:15: WAC

10

4:15: End of Day

- Students, staff, and families wear masks
- Students, staff, and families consistently adhere to social distance guidelines (6-ft)

A Day in the Life (M, T, Th, F)

What we know:

- 2 Day a Week Model with AM and PM Sessions
- 2 Hours 15 minutes in person learning

What we are working on:

- Recommended instructional schedule
- Ordering materials for students individual engagement

Synchronous/Asynchronous Instruction

What we know:

- Teachers have learned what works for their students

What we are working on:

- Creating a scope a sequence for learning that includes academics and focus on SEL and community building
- Determining how to best support asynchronous learning options

Transition Support and Planning

What we know:

- Time for staff transition planning will be identified prior to students being on site
- Materials and Resources will be developed and available to support this planning
- TLL Staff will be available to assist

What we are working on:

- Specific guidance to support both teacher preparation and student learning

What to Expect (Timeline)

Jan 14 Hybrid Return Family Webinar

Jan 14-28 Family Commitment Window

EXIT SURVEY

Please complete the Exit Survey for this webinar by visiting: bit.ly/eiac0112

Thank You!



>>highlineschools.org/ReturnToLearn>>

